

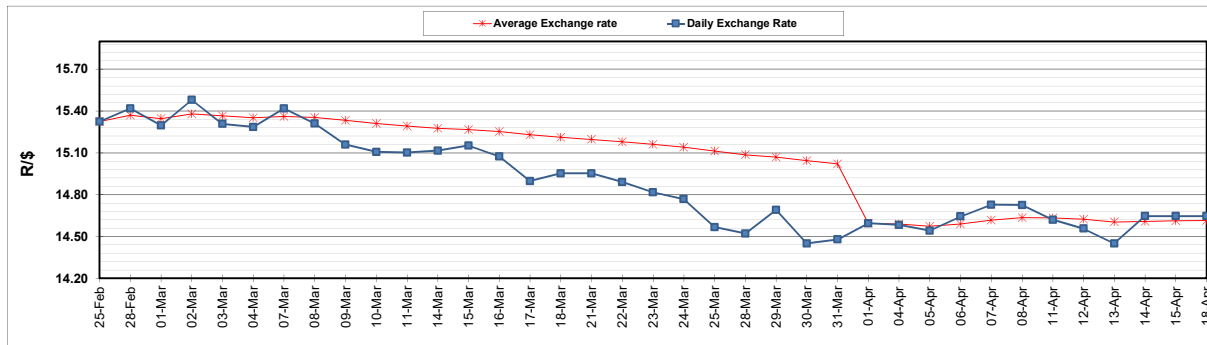
	PETROL 95 ULP	PETROL 93 ULP & LRP	DIESEL 0.05%	DIESEL 0.005%	ILL. PAR.
GAUTENG PUMP PRICE (SA c/l) AS FROM 06/04/2022	2,196.000	2,163.000	-	-	-
WHOLESALE PRICE (SA c/l) AS FROM 06/04/2022	-	-	2,101.440	2,123.840	1,584.688
SINGLE NATIONAL MAXIMUM RETAIL PRICE	-	-	-	-	2,045.000
BASIC FUEL PRICE - 18/04/2022 (SA c/l)	1,251.528	1,230.568	1,499.943	1,513.398	1,439.966
PRESS RELEASE CONTRIBUTION TO BFP 06/04/2022 - 18/04/2022 (SA c/l)	1,278.710	1,255.710	1,402.630	1,425.030	1,363.128
UNIT OVER/(UNDER) RECOVERY - 18/04/2022 (SA c/l)	27.182	25.142	(97.313)	(88.368)	(76.838)
AVERAGE BASIC FUEL PRICE 01/04/2022 - 18/04/2022	1,198.551	1,179.553	1,405.442	1,418.813	1,363.216
AVERAGE UNIT OVER/(UNDER) RECOVERY 01/04/2022 - 18/04/2022	35.549	33.547	(76.562)	(71.533)	(66.588)

ANALYSIS MOVEMENT OF AVERAGE OVER/(UNDER) RECOVERY

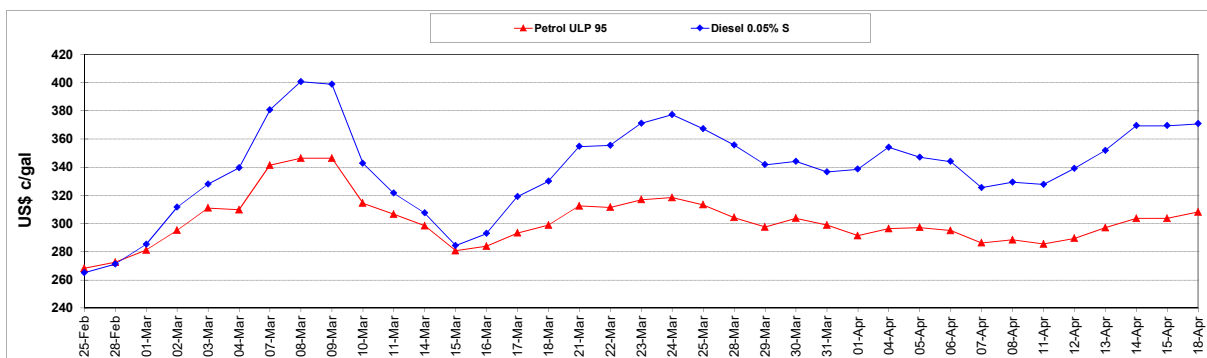
	PETROL 95	PETROL 93	DIESEL 0.05%	DIESEL 0.005%	ILL. PAR.
- MOVEMENT IN INTERNATIONAL PRODUCT PRICES	2.220	0.746	(115.644)	(110.987)	(104.496)
- MOVEMENT IN EXCHANGE RATE	33.329	32.801	39.082	39.454	37.908
AVERAGE UNIT OVER/(UNDER) RECOVERY 01/04/2022 - 18/04/2022	35.549	33.547	(76.562)	(71.533)	(66.588)

R/\$ EXCHANGE RATE - (R/\$14.6458 - 18/04/2022)

EXCHANGE RATE USED IN BASIC FUEL PRICE



INTERNATIONAL PRODUCT PRICES OF BASKET USED IN BASIC FUEL PRICE



BASIC FUEL PRICE IN SA CENTS PER LITRE

